

# Cove Sailing Club



## 2025

---

## CONDITIONS AND SAILING INSTRUCTIONS FOR CLUB RACES

- RULES.** Except where hereafter specified races shall be sailed under RYA RRS 2025-2028, and any special instructions which may be issued from time to time, and the relevant class rules.
- CONDITIONS OF ENTRY.** The safety of a yacht/ dinghy and its entire management including insurance shall be the sole responsibility of the owner/ competitor racing. The establishment of these sailing instructions in no way limits or reduces the complete and unlimited responsibility of the owner/ competitor.  
  
The club does not accept liability for injuries to persons, damage to or loss of property whilst on club premises or while using club facilities. With the exception of "Open Events" yachts/ dinghies participating in club races shall at all times be helmed by members of the club. No entrants in club races shall be eligible for points or prizes until all current subscriptions have been paid.
- RACES.** Races shall be offered for the Loch Long One Design class on Tuesdays and Fridays starting at 19:30hrs and occasionally on Saturdays and Sundays starting at 14:00hrs as per the fixture list. Races shall be offered for a Combined Handicap Class with CYCA listings as required. The class signal for LLOD class shall be code flag 'V'. Combined handicap code flag pennant '1'. Code flag for dinghies pennant '2'.
- COURSES.** Courses shall be chosen from the course tables, and indicated by displaying a white course number on a black background on the veranda. Alternatively the Race Committee can advise a Different Course which will be promulgated to all Participants. Flying the class flag with one sound signal shortly before the finish of a completed round shall mean the same course shall be repeated. When the letter 'O' is displayed with course number, LLOD yachts will sail Combined Handicap courses. When the 'O' board is displayed on its

own, the course to be sailed is to be obtained from the Race Officer. When the letter 'C' flag is displayed with a new course number and multiple sound signals at the end of the first round, the second round of the new course shall be sailed.

- STARTING AND FINISHING.** The starting and finishing line shall be a straight line between the main flagpole and either mark 'Y' or 'Z'.
- START.** RYA RRS Rule 26 shall apply
- TIME LIMIT.** There shall be a 'fixed time limit' for all classes. For evening races at 21:30 hrs and for afternoon races at 17:30 hrs. If by the 'fixed time limit' no yacht in a class has finished a race but one or more yachts in that class have finished a round, the race shall be deemed to have finished at the end of the completed round, without regard to any subsequent event.  
If one yacht in a class shall have completed the course, or a round, within the 'fixed time limit', the time limit will be extended for the other competitors in the class by 30 minutes. This will be indicated by two sound signals and by the hoisting of the class signal of any class eligible to continue racing. The expiry of this extension to the 'fixed time limit' shall be indicated by two sound signals in rapid succession and by the lowering of all class signals. This changes RYA RRS rule 35
- FINISHING AFTER THE HOURS OF DARKNESS.** All yachts shall carry a flashlight suitable for illuminating her sail number and shall do so when approaching the finishing line.
- ALTERATIONS.** The right is reserved for the race committee to cancel races, alter courses, stop races at any time and place, and to alter any programme as deemed advisable.
- PROTESTS.** Protests shall be lodged with the race officer or Hon secretary within 48hrs of a race. Protests shall be heard at the clubhouse, or elsewhere, at a suitable time.
- SCORING SYSTEM.** The RYA RRS Low Points Scoring System Appendix A applies.
- LONE YACHT START.** A yacht appearing at the start, alone in her class, shall not be given a race in her class. This does not apply to pursuit races.

The Joseph D Ross Memorial Trophy for the LLOD Club Championship will be awarded to the LLOD Yacht with the lowest aggregate points from 20 of the 28 club races of series A, B, C, D, E and F

Tullis Salver	Points series A	3 out of 4 races
Young Cup	Points series B	3 out of 4 races
Teacher Cup	Points series C	3 out of 4 races
Club Cup	Points series D	3 out of 4 races
Bellcairn Cup	Points series E	3 out of 4 races
Floodtide Cup	Points series F	3 out of 4 races
James Croll Cup	Points series G	3 out of 4 races

Peaton Trophy Awarded to the novice helmsman with the lowest aggregate score from 15 of the 28 points series club races.

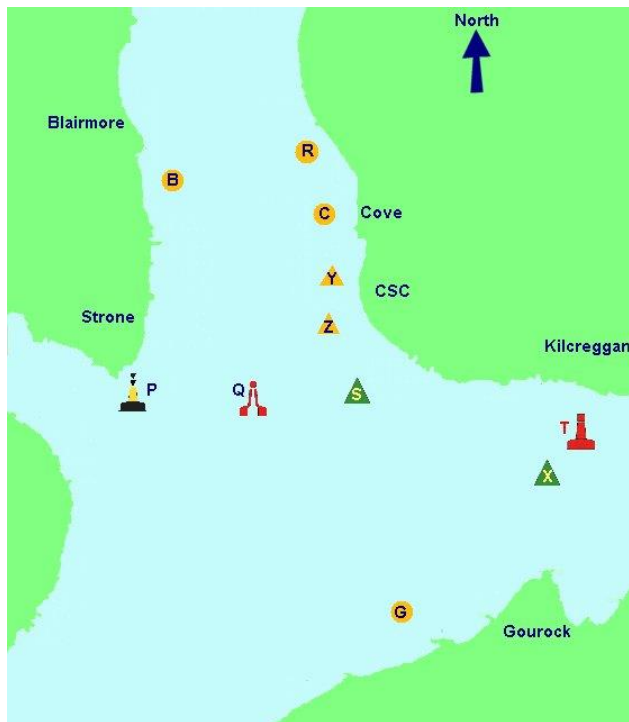
Notes: Cadets' Races. Open to any member of the club under 18 years of age at the beginning of the racing season.

Crews' Races participants' suitability is subject to the committee's scrutiny.

Eligibility for Cadets' Races will be at the discretion of the committee.

## Course Chart for LLOD and Combined Handicap

Courses for Loch Long OD Class					Courses for Combined Handicap Class				
Course		Leave marks to	Wind	Approx Nautical Mileage		Leave marks to	Wind	Approx Nautical Mileage	
1	YSCY YSCY	STBD	S	1.4 1.4	YSRY YSRY	STBD	S	3.0 3.0	
2	ZCSZ ZCSZ	PORT	N	1.4 1.4	ZRSZ ZRSZ	PORT	N	3.0 3.0	
3	YSQCY YSQCY	STBD	Var	2.1 2.1	YSQRY YSQCY	STBD	Var	3.5 2.1	
4	ZCQSZ ZCQSZ	PORT	Var	2.1 2.1	ZRQSZ ZCQSZ	PORT	Var	3.5 2.1	
5	ZRQSZ ZCQSZ	PORT	N	3.5 2.1	ZRQSZ ZRQSZ	PORT	N	3.5 3.5	
6	YSQRY YSQCY	STBD	NE	3.5 2.1	YSQRY YSQCY	STBD	NE	3.5 2.1	
7	ZYQSZ ZYQSZ	PORT	E	1.6 1.6	ZCQSZ ZCQSZ	PORT	E	2.1 2.1	
8	ZYPTZ ZQSZ	PORT	E	4.7 1.5	ZCPTZ ZCQSZ	PORT	E	5.3 2.8	
9	ZCPXZ ZQXZ	PORT	SE	5.8 2.7	ZCPXZ ZQXZ	PORT	SE	5.8 2.7	
10	ZCQXZ ZQXZ	PORT	SE	4.5 2.7	ZCQXZ ZQXZ	PORT	SE	4.5 2.7	
11	ZYTZ ZYTZ	PORT	SE	2.0 2.0	ZYTZ ZYTZ	PORT	SE	2.0 2.0	
12	ZRPSZ ZCQSZ	PORT	SW	4.8 2.1	ZRPSZ ZCQSZ	PORT	SW	4.8 2.1	
13	YSPCY YSPCY	STBD	W	3.7 3.7	YTPCY YSPCY	STBD	W	5.0 3.7	
14	ZBSZ ZQTZ	PORT	NW	3.6 2.7	ZBSZ ZQTZ	PORT	NW	3.6 2.7	
15	YXSCY YXSCY	STBD	NW	3.2 3.2	YXSCY YXSCY	STBD	NW	3.2 3.2	
16	ZTQYZ ZTQYZ	STBD	E or W	3.1 3.1	ZRPTZ ZCQSZ	PORT	Var	6.3 2.1	
17	ZTYZ ZTYZ	STBD	E or NW	2.1 2.1	YXPCY YXQCY	STBD	W or NE	5.0 3.8	
18	YTQCY YQCY	STBD	W	3.8 2.0	YTQCY YQCY	STBD	W	3.8 2.0	
19	ZCQTZ ZCQSZ	PORT	E or SW	4.5 2.1	ZCQTZ ZCQSZ	PORT	E or SW	4.5 2.1	
20	ZCPSZ ZCPSZ	PORT	E or SW	3.7 3.7	ZCPXZ ZCPXZ	PORT	E or SW	5.8 5.8	



### Key To Racing Marks

B	Blairmore CSC Buoy	Red.
C	Cove CYCA Buoy	"Day Glo" Orange.
G	Levan CYCA Buoy with topmark	"Day Glo" Orange.
I	Inflatable Temporary Mark.	"Day Glo" Orange.
P	Strone CPA No.30. Lit Navigation Buoy.	Yellow Black.
Q	Loch Long Entrance CPA Lit Mid Channel Buoy.	Red/White.
R	Knockderry CSC Buoy	"Day Glo" Orange.
S	Cove CPA Kil.No.3 Lit Navigation Buoy.	Green.
T	Kilcreggan CPA Kil No.2 Lit Navigation Buoy.	Red.
X	Kilcreggan CPA Kil No.1. Lit Navigation Buoy.	Green.
Y/Z	CSC Start/ Finish Buoys.	"Day Glo" Orange.

### Loch Long Light Weather Course

- 1A – ZYSZ  
 ZYSZ - leave marks to PORT  
 2A - YCZY – leave marks to PORT

<b>Apr</b>		
26 <sup>th</sup>	<b>Saturday</b>	<b>RNLI Pennant (Open) / Boag Trophy (LL)</b>
29 <sup>th</sup>	Tuesday	Points Series A1
<b>May</b>		
2 <sup>nd</sup>	Friday	Points Series B1
6 <sup>th</sup>	Tuesday	Points Series A2
9 <sup>th</sup>	Friday	Points Series B2
13 <sup>th</sup>	Tuesday	Points Series A3
16 <sup>th</sup>	Friday	Loch Long Cadet Race
20 <sup>th</sup>	Tuesday	Points Series A4
23 <sup>rd</sup>	Friday	Open Race
27 <sup>th</sup>	Tuesday	Points Series C1
30 <sup>th</sup>	Friday	Points Series B3
<b>Jun</b>		
3 <sup>rd</sup>	Tuesday	Loch Long Cadet Race
6 <sup>th</sup>	Friday	Points Series B4
7 <sup>th</sup>	<b>Saturday</b>	<b>Cruise in Company to Ardentimny</b>
10 <sup>th</sup>	Tuesday	Points Series C2
13 <sup>th</sup>	Friday	Bottle of Whisky Race (Open)
14 <sup>th</sup>	<b>Saturday</b>	<b>Cove Regatta (Open)</b>
17 <sup>th</sup>	Tuesday	Points Series C3
20 <sup>th</sup>	Friday	Points Series D1
21 <sup>st</sup>	<b>Saturday</b>	<b>Open Race KGV Quaih</b>
24 <sup>th</sup>	Tuesday	Points Series C4 /Willie Hamilton Trophy
27 <sup>th</sup>	Friday	Loch Long Cup (Open Race)
<b>Jul</b>		
1 <sup>st</sup>	Tuesday	Points Series E1
4 <sup>th</sup>	Friday	Points Series D2
5 <sup>th</sup>	<b>Saturday</b>	<b>Clyde One Design Regatta</b>
8 <sup>th</sup>	Tuesday	Points Series E2
11 <sup>th</sup>	Friday	Loch Long Crews Race
15 <sup>th</sup>	Tuesday	Points Series E3
18 <sup>th</sup>	Friday	Rose Cup (Open Race)
20 <sup>th</sup>	<b>Sunday to</b>	<b>Loch Long Week</b>
25 <sup>th</sup>	<b>Friday</b>	<b>Held at Cove Sailing Club</b>
29 <sup>th</sup>	Tuesday	Points Series E4
<b>Aug</b>		
1 <sup>st</sup>	Friday	Points Series D3
5 <sup>th</sup>	Tuesday	Points Series G1
8 <sup>th</sup>	Friday	Points Series D4 / Rockingham Cup
12 <sup>th</sup>	Tuesday	Points Series G2
15 <sup>th</sup>	Friday	Points Series F1/ Costain Cup
19 <sup>th</sup>	Tuesday	Points Series G3
22 <sup>nd</sup>	Friday	Points Series F2
26 <sup>th</sup>	Tuesday	Loch Long Crews Race
29 <sup>th</sup>	Friday	Points Series F3
<b>Sep</b>		
2 <sup>nd</sup>	Tuesday	Points Series G4
5 <sup>th</sup>	Friday	Points Series F4
6 <sup>th</sup>	<b>Saturday</b>	<b>Closing Muster (Open)</b>