

G.S.S. & THE BOTANIST GIN REGATTA

Saturday 14th June 2025

Organising Authority: Cove Sailing Club

SAILING INSTRUCTIONS **for** **Flying Fifteens Pipers, Loch Longs, Etchells and** **Mixed Handicap Dinghies**

1. RULES

- 1.1 The regatta will be governed by the 'Rules' as defined in the Racing Rules of Sailing 2025-2028(RRS), and the Prescriptions of the RYA and their relevant Appendices.
- 1.2 The Conditions of Entry, the Rules of each Class, the Sailing Instructions, and any special instructions or amendments issued by the Organising Authority will apply. In the event of conflict these Sailing Instructions shall prevail.

2. NOTICES TO COMPETITORS

Notices to competitors will be posted on the official notice board located at Cove Sailing Club, which, for the purpose of these Sailing Instructions, is the Race Office.

3. CHANGES TO SAILING INSTRUCTIONS

Any change to these Sailing Instructions will be posted before 09:00 on the day it will take effect including the Schedule of Races.

4. SIGNALS MADE ASHORE

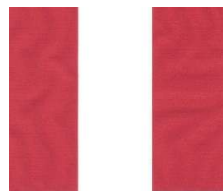
Signals made ashore will be displayed on the flagstaff outside the Race Office.

5. SCHEDULE OF RACES, STARTS, CLASS, FLAGS & STARTING TIMES

5.1 Racing is scheduled for yachts of the following Classes:

Start	Class	Class Flag	1st Start Time
A	Flying Fifteen	NN7	11.30
B	Piper	NN2	11.35*
C	Loch Long	Code Flag V	11.40*
D	Etchell	Code Flag D	11.45*
E	Handicap Dinghies	Pdt 2	11.50*

* unless there is a General Recall for a previous class start



NN7



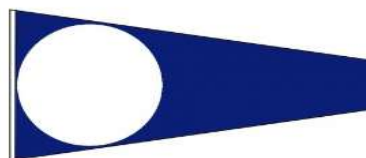
NN2



Code Flag V



Code Flag D



Pdt 2



Code Flag E

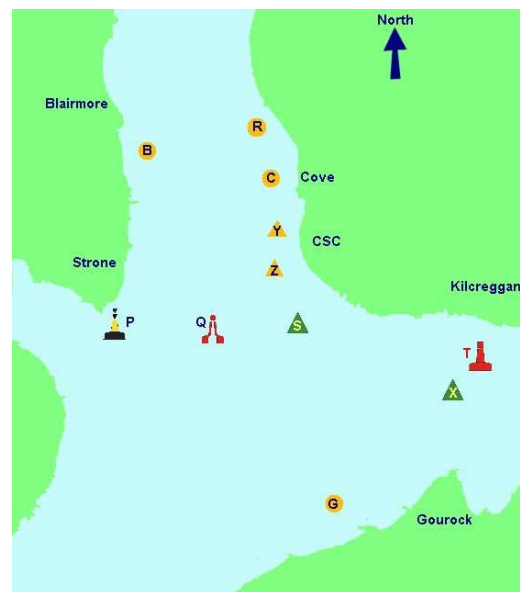
- 5.2 There will be a Time Signal at 11.20.
- 5.3 A maximum of three races for each class may be sailed.
- 5.4 International Code Flag E will be displayed at the end of a race if a subsequent race is to take place. Flag E will be removed with one sound signal five minute before the warning signal for subsequent races.
- 6. RACING AREA**
The racing will be held in Loch Long and environs.
- 7. MARKS**
The marks will be as set out in the Cove Sailing Club race instructions.
- 8. THE START**
8.1 Races will be started using RRS 26.
8.2 The Starting Line will be between the Clubhouse flagpole and Marks Y or Z.
- 9. LONE YACHT AT THE START**
In the event of only one yacht in any Class appearing at a Start Line no race will take place for that Class and no points will be awarded. The Start Sequence for subsequent starts will NOT be altered as a result of such occurrence.
- 10. THE COURSES.**
10.1. The course will be in accordance with the Cove Sailing Club chart for the Loch Long Class. The course number will be displayed from the Race Office in white on a black background.
10.2 The starting and finishing line shall be a straight line between the main flagpole and either mark Y or Z.
- 11. KEEPING CLEAR**
In addition to RRS 24.1 yachts shall keep clear of the Starting Line prior to their Warning Signal and of the Finishing Line after finishing.
- 12. TIME LIMITS**
12.1 In addition to RRS 35, there will be a 'Fixed Time Limit' of TWO HOURS for each race.
12.2 If by the 'Fixed Time Limit' no yacht in a Class has finished but one or more yachts have completed one or more rounds the results will be taken from the position of the yachts at the end of the last completed round, Until the expiry of the 'Fixed Time Limit' all yachts are racing.

- 12.3 If no yacht has completed one round then the race will be considered abandoned.
- 13. PROTESTS AND REQUESTS FOR REDRESS**
- 13.1 Protest forms are available from the Race Office. Protests shall be delivered there within the protest time limit.
- 13.2 For each Class, the protest time limit is 60 minutes after the last yacht has finished the last race of the day. The same protest time limit applies to all protests by the Race Committee and Protest Committee and to requests for redress. This changes RRS 61.3 and 62.2
- 13.3 Parties to protests are advised to remain in the vicinity of the Race Office.
- 14. RESULTS**
- Results will be posted at the Race Office as soon as possible after racing.
- 15. SCORING**
- 15.1 The Low Point scoring system of RRS Appendix A will apply.
- 15.2 A yacht shall not count the result of a race unless the entry fee has been paid prior to the start of the Regatta.
- 15.3 No discard will be allowed.
- 16. SAFETY REGULATIONS**
- 16.1 In addition to RRS 1.2 all yachts shall carry an anchor and warp, a tow line, and a bailing device each of which shall be of a type and size suitable for the purpose for which they are intended.
- 16.2 A yacht that retires from a race shall endeavour to notify the Race Office as soon as possible before leaving the Racing Area.
- 17. CLYDEPORT OPERATIONS LIMITED (COL) INSTRUCTIONS**
- 17.1 NARROW CHANNELS. Attention is drawn to the International Regulations for the Prevention of Collision at Sea, 1972. Particular notice shall be taken of Rule 9b which states 'a vessel of less than 20 metres in length or a sailing vessel shall not impede the passage of a vessel which can safely navigate only within a 'Narrow Channel or Fairway'.
- 17.2 Whilst racing or on passage in the Firth of Clyde north of Cumbrae Head, yachts shall regard 'Recommended Channels', marked as dotted lines on Hydrographic Office charts as a 'Narrow Channel' within the meaning of IRPCS 9b. Furthermore Clydeport Operations Limited has decreed that

any waters of the Firth of Clyde where vessels by virtue of size, draught, speed or proximity to land, hazards and other vessels are unable to manoeuvre freely must be regarded as a 'Narrow Channel.'

- 17.3 Whilst racing, any yacht which is unable for reasons of lack of wind or other cause, to sail clear of a large power driven vessel shall start her engine and/or paddle in order to clear and thereafter shall report full details to the Race Committee.
- 18. RADIO COMMUNICATION**
The Race Committee may maintain a watch on Channel 77, primarily for safety purposes.
- 19. PRIZES**
Prizes will be awarded and trophies will be held until the following year's Regatta.
- 20. INSURANCE**
Each participating yacht shall be insured with valid third-party liability insurance with a minimum cover of £3 million.
- 21 DISCLAIMER OF LIABILITY**
- 21.1 Competitors participate in the Regatta entirely at their own risk. See RRS 4, Decision to Race. The safety of a yacht and her entire management including civil responsibility to third parties shall be the sole responsibility of the owner/skipper racing the yacht. The establishment of these sailing instructions in no way limits or reduces the complete responsibility of the owner/skipper for his/her crew/yacht or equipment and the management thereof.
- 21.2 The Organising Club and their representatives disclaim any and every responsibility for any loss, damage, injury or inconvenience to persons, yachts or associated subjects howsoever arising directly or indirectly, ashore or afloat, from their policy, rules or ruling before, during and after the races and related activities.

Courses for Loch Long OD Class								
Course		Leave marks to	Wind	Approx Nautical Mileage				
1	YSCY YSCY	STBD	S	1.4 1.4				
2	ZCSZ ZCSZ	PORT	N	1.4 1.4				
3	YSQCY YSQCY	STBD	Var	2.1 2.1				
4	ZCQSZ ZCQSZ	PORT	Var	2.1 2.1				
5	ZRQSZ ZCQSZ	PORT	N	3.5 2.1				
6	YSQRY YSQCY	STBD	NE	3.5 2.1				
7	ZYQSZ ZYQSZ	PORT	E	1.6 1.6				
8	ZYPTZ ZQSZ	PORT	E	4.7 1.5				
9	ZCPXZ ZQXZ	PORT	SE	5.8 2.7				
10	ZCQXZ ZQXZ	PORT	SE	4.5 2.7				
11	ZYTZ ZYTZ	PORT	SE	2.0 2.0				
12	ZRPSZ ZCQSZ	PORT	SW	4.8 2.1				
13	YSPCY YSPCY	STBD	W	3.7 3.7				
14	ZBSZ ZQTZ	PORT	NW	3.6 2.7				
15	YXSCY YXSCY	STBD	NW	3.2 3.2				
16	ZCPTZ ZCQZ	PORT	E or SW	5.0 1.9				
17	YXPCY YSCY	STBD	W or NE	5.0 1.4				
18	YTQCY YQCY	STBD	W	3.8 2.0				
19	ZCQTZ ZCQSZ	PORT	E or SW	4.5 2.1				
20	ZCPSZ ZCPSZ	PORT	E or SW	3.7 3.7				



Key To Racing Marks

Y/Z *	CSC Start/ Finish Buoys. "Day Glo" orange.
B	Blairmore CSC Buoy. Red.
C	Cove CYCA Buoy with topmark. "Day Glo" orange.
S	Cove CPA Kil No.3 Lit Navigation Buoy (Green)
T	Kilcreggan CPA Kil No.2 Lit Navigation Buoy (Red)
X	Kilcreggan CPA Kil No.1. Lit Navigation Buoy (Green)
G	Levan CYCA Buoy with topmark. "Day Glo" Orange
P	Strone CPA No.30. Lit Navigation Buoy. (Yellow Black)
Q	Loch Long Entrance CPA Lit Mid Channel Buoy (Red/White)
R	Knockderry CSC Buoy. "Day Glo" Orange.
I	Inflatable Temporary Mark. "Day Glo" Orange.

* Y starts to south Z starts to north